



The Art and Science of Presenting your Data



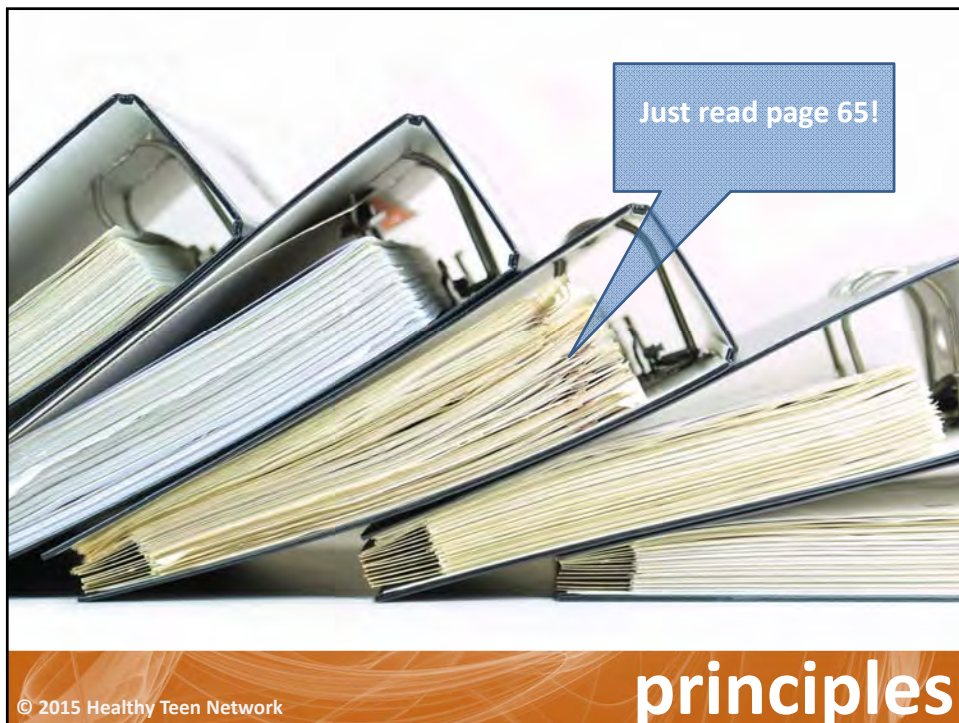
Genevieve Martínez-García PhD
Senior Researcher

1

Disclaimer

This presentation was prepared under a contract from the Office of Adolescent Health, U. S. Department of Health & Human Services. The views expressed in this presentation are those of the authors and do not necessarily represent the policies of Health and Human Services or the Office of Adolescent Health.

2

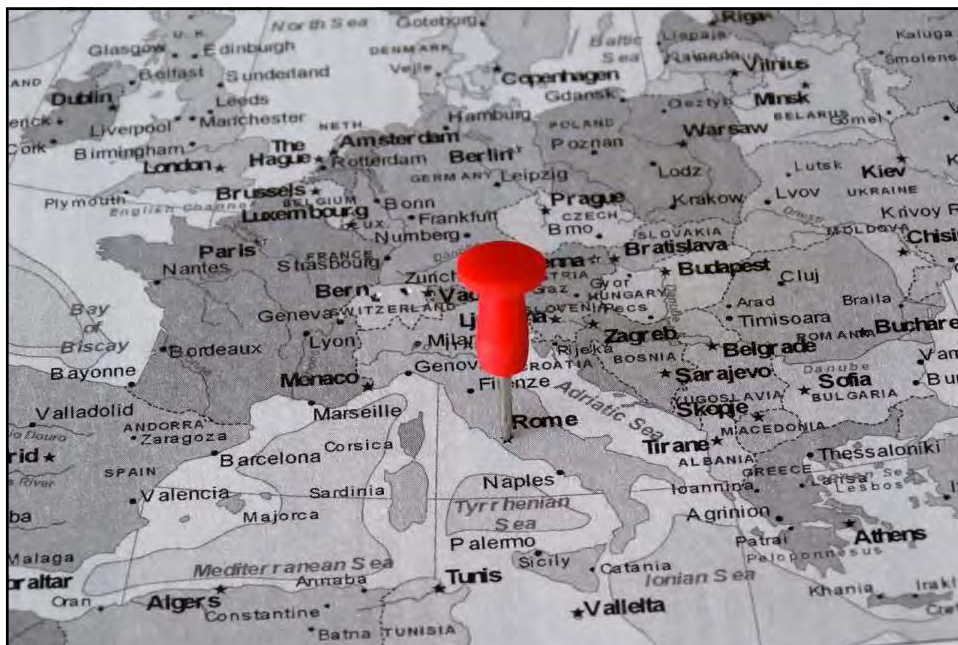


Pictorial Superiority Effect



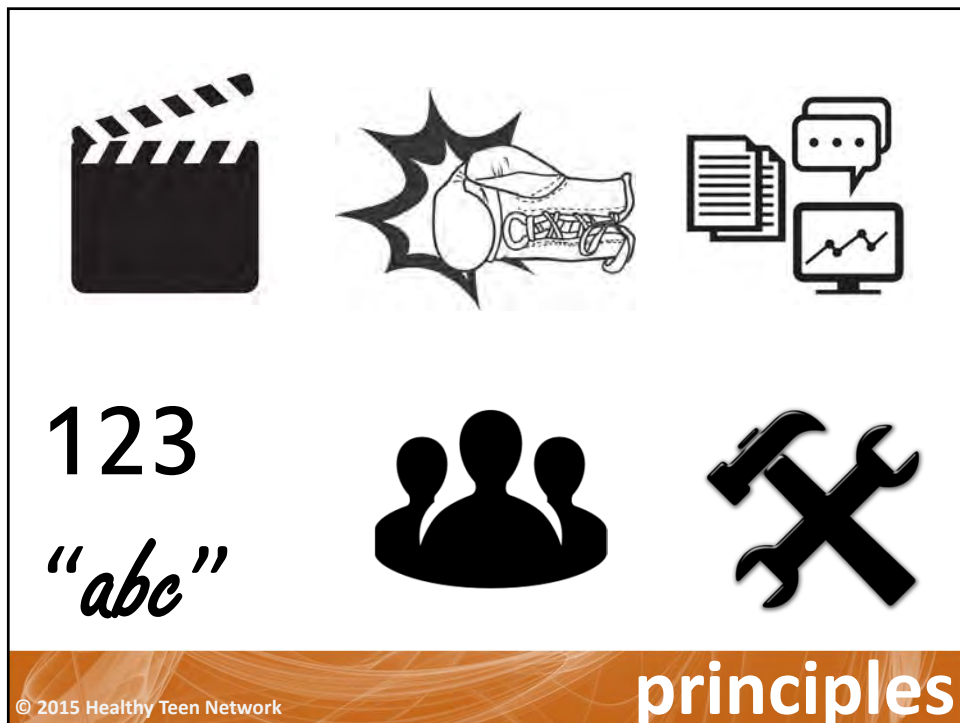
© 2015 Healthy Teen Network

principles



© 2015 Healthy Teen Network

principles



Ann K. Emery
data analysis + visualization

TEACH ME ABOUT... | EVENTS | SERVICES | BLOG | ABOUT | CONTACT

EMERY'S ESSENTIALS Chart Choosing Tool

ALL / SMALL MULTIPLES / COMPARING 2 OR MORE CATEGORIES / RANGES OR DISPERSION / PART TO WHOLE / CO-ABLE IN EXCEL / GEOGRAPHIC MAPS / RELATIONSHIPS / COLLAGES / QUALITATIVE / EXPLORATORY / CORRELATION / 1 POINT IN TIME / 2 POINTS IN TIME / 3+ POINTS IN TIME

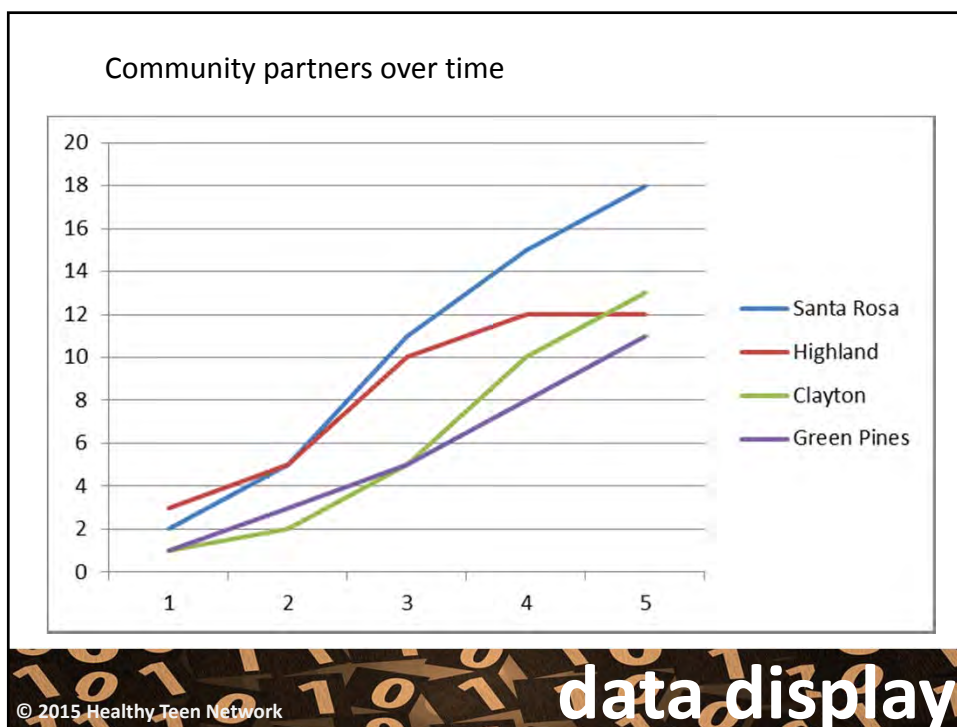
Heat Tables Social Network Map Pie

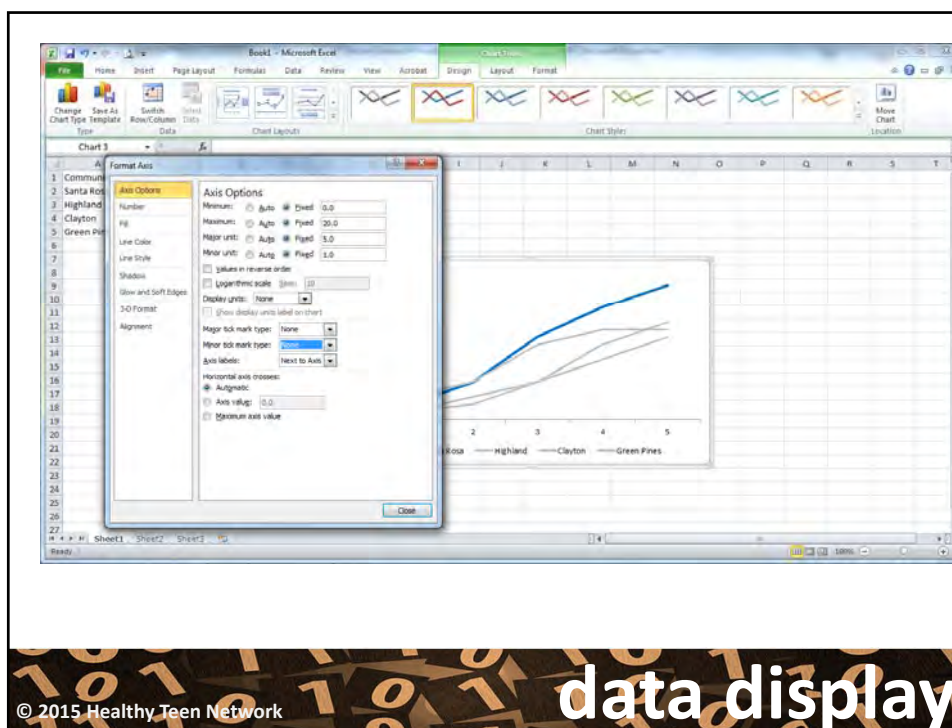
Donut Small Multiples Pie Small Multiples Donut

<http://annkemery.com/essentials/>

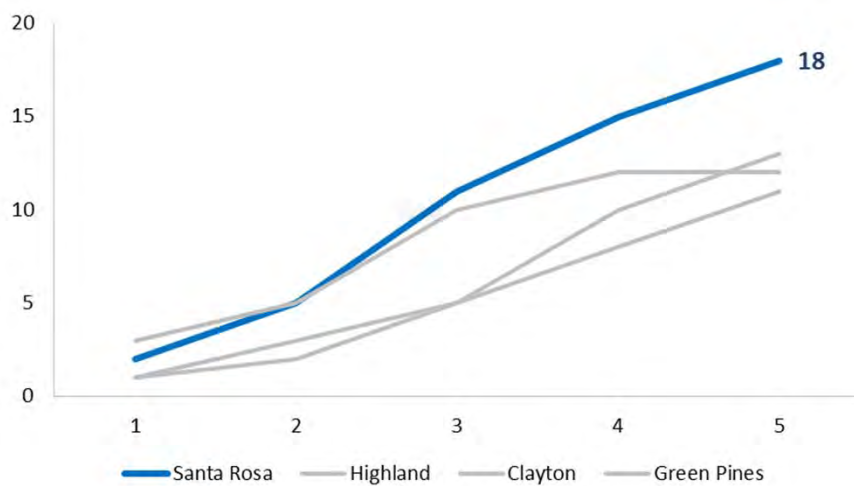
© 2015 Healthy Teen Network

data display



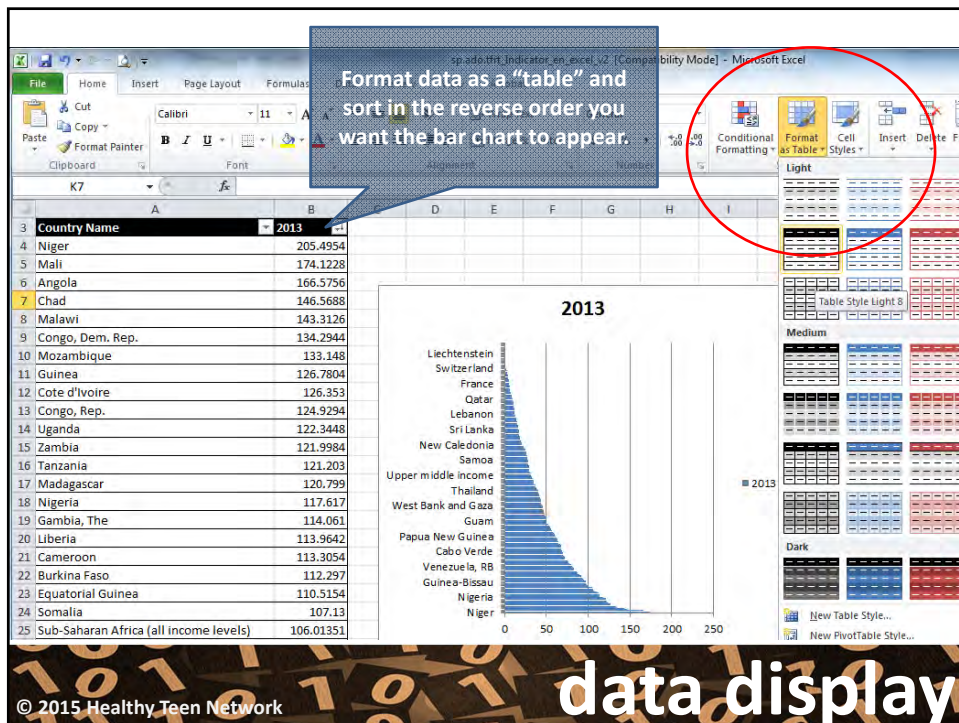
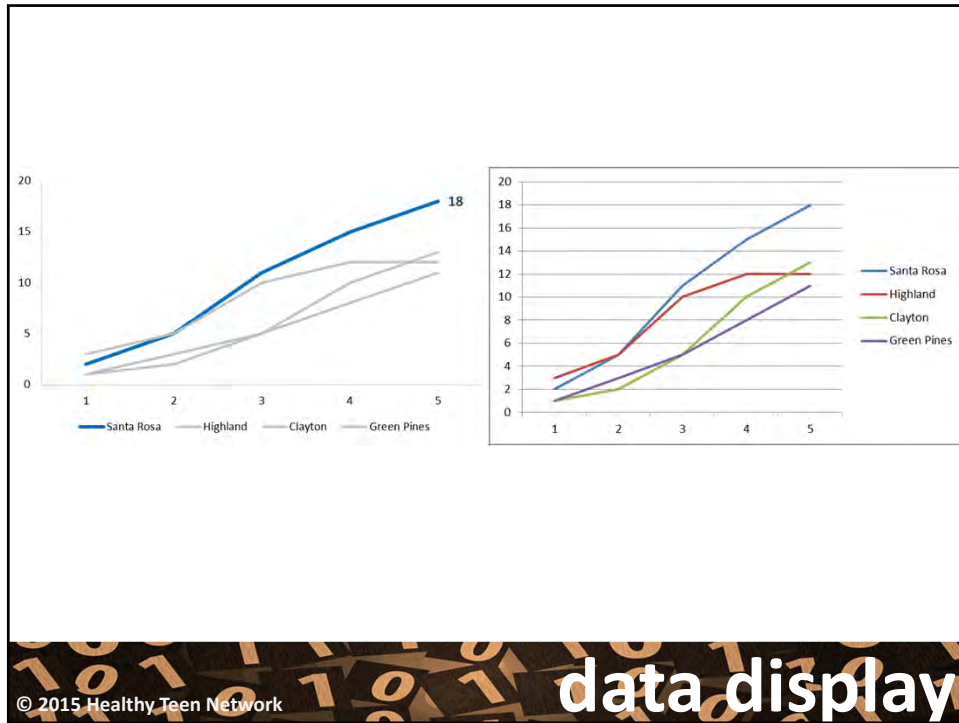


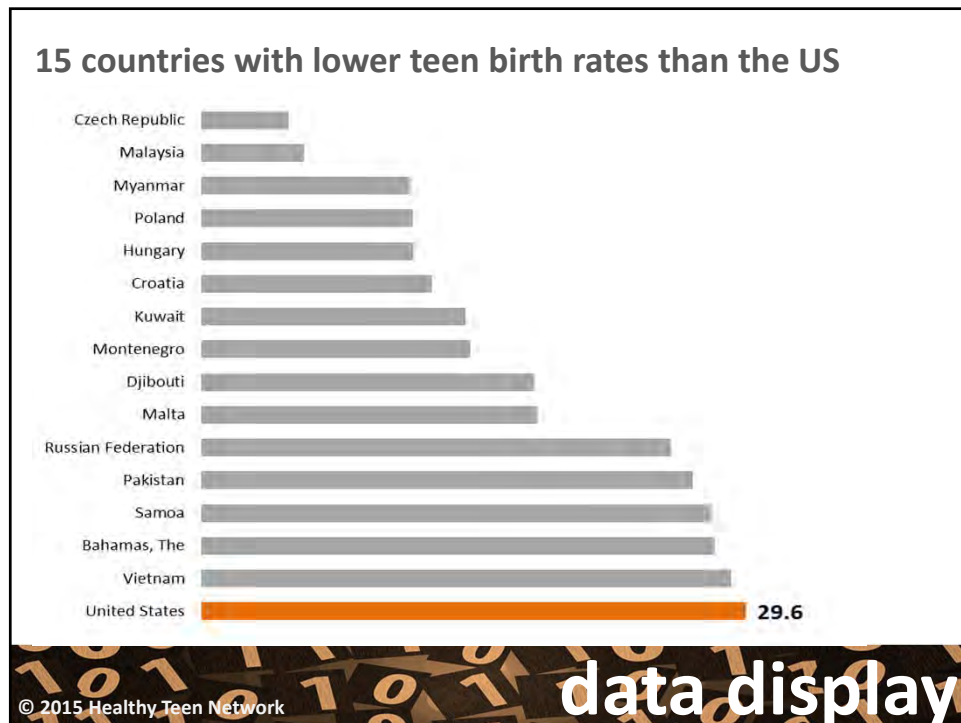
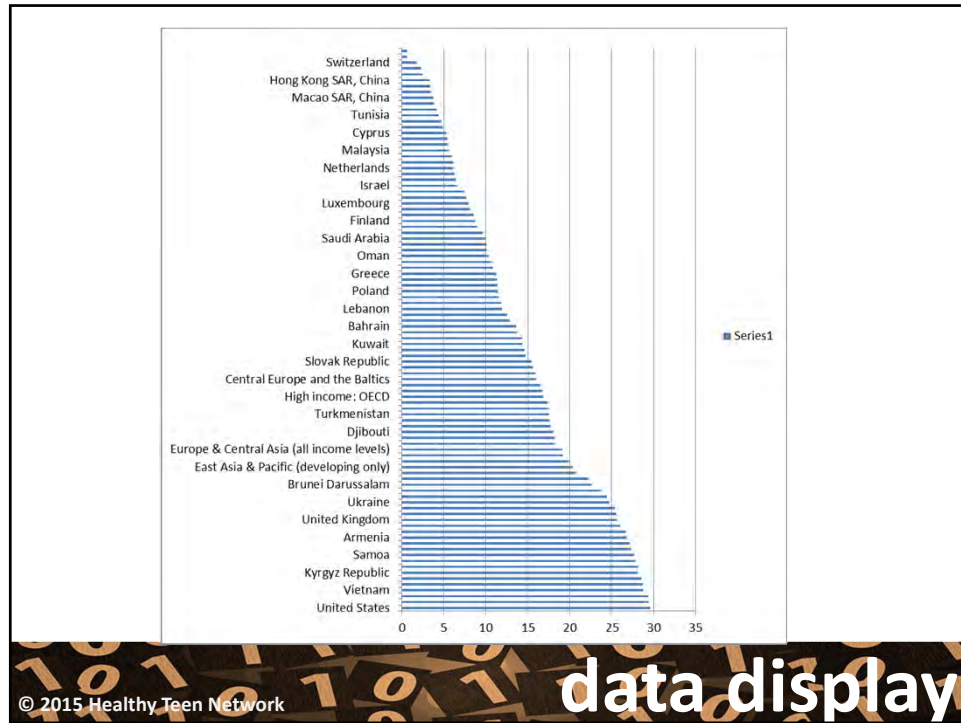
**Santa Rosa community exceeded
community stakeholder recruitment expectations.**



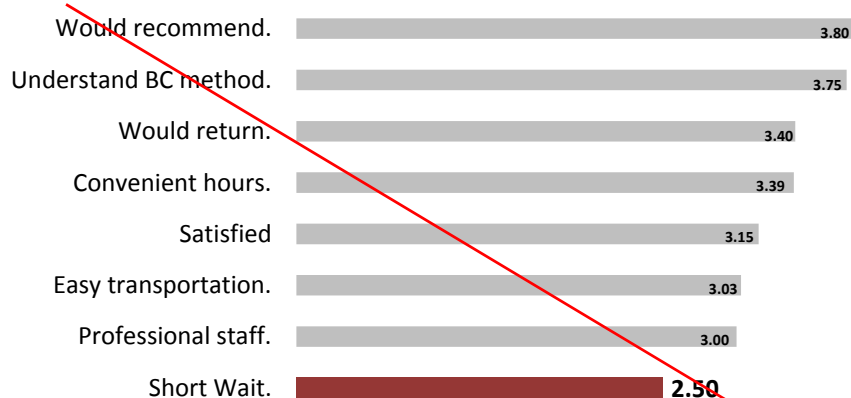
© 2015 Healthy Teen Network

data display





Clients have to wait **more than 30 minutes to be seen.**



"Waiting time is absurd!" Lisa, 16

© 2015 Healthy Teen Network

data display

Super Healthy Clinic Satisfaction Data 2014	
Clinic schedule is convenient.	3.39
Waited no more than 30 mins to be seen.	2.50
I understand how to take my contraception.	3.75
I am satisfied with my family planning visit.	3.15
The staff was professional.	3.00
I would return to the clinic to receive family planning services.	3.40
I would recommend this clinic to a friend.	3.80
It is easy to get transportation to get to the clinic.	3.03

© 2015 Healthy Teen Network

data display

Family planning services assessed in past 12 months										
Characteristic	Number	At least one family planning service in the past 12 months ^a	20% service method	20% correct counseling	20% correct decision at visit	20% correct counseling	20% correct counseling	20% correct counseling	20% correct counseling	20% correct counseling
Age										
15-19	11,756	66.8 (5.6)	66.4 (5.7)	76.7 (5.6)	83.6 (5.6)	6.1 (5.2)	1.6 (5.6)	5.2 (5.2)	0.6	
20-24	13,678	76.8 (1.7)	76.8 (1.7)	76.8 (1.7)	76.8 (1.7)	6.6 (1.7)	8.3	8.3 (1.6)	4.8	
25-29	13,680	87.7 (1.7)	87.7 (1.7)	87.7 (1.7)	87.7 (1.7)	8.0 (1.7)	8.0 (1.7)	8.0 (1.7)	8.0	
30-34	13,680	87.7 (1.7)	87.7 (1.7)	87.7 (1.7)	87.7 (1.7)	8.0 (1.7)	8.0 (1.7)	8.0 (1.7)	8.0	
35-39	13,680	87.7 (1.7)	87.7 (1.7)	87.7 (1.7)	87.7 (1.7)	8.0 (1.7)	8.0 (1.7)	8.0 (1.7)	8.0	
40-44	13,680	87.7 (1.7)	87.7 (1.7)	87.7 (1.7)	87.7 (1.7)	8.0 (1.7)	8.0 (1.7)	8.0 (1.7)	8.0	
45-49	13,680	87.7 (1.7)	87.7 (1.7)	87.7 (1.7)	87.7 (1.7)	8.0 (1.7)	8.0 (1.7)	8.0 (1.7)	8.0	
50-54	13,680	87.7 (1.7)	87.7 (1.7)	87.7 (1.7)	87.7 (1.7)	8.0 (1.7)	8.0 (1.7)	8.0 (1.7)	8.0	
55-59	13,680	87.7 (1.7)	87.7 (1.7)	87.7 (1.7)	87.7 (1.7)	8.0 (1.7)	8.0 (1.7)	8.0 (1.7)	8.0	
60-64	13,680	87.7 (1.7)	87.7 (1.7)	87.7 (1.7)	87.7 (1.7)	8.0 (1.7)	8.0 (1.7)	8.0 (1.7)	8.0	
65-69	13,680	87.7 (1.7)	87.7 (1.7)	87.7 (1.7)	87.7 (1.7)	8.0 (1.7)	8.0 (1.7)	8.0 (1.7)	8.0	
70-74	13,680	87.7 (1.7)	87.7 (1.7)	87.7 (1.7)	87.7 (1.7)	8.0 (1.7)	8.0 (1.7)	8.0 (1.7)	8.0	
75-79	13,680	87.7 (1.7)	87.7 (1.7)	87.7 (1.7)	87.7 (1.7)	8.0 (1.7)	8.0 (1.7)	8.0 (1.7)	8.0	
80-84	13,680	87.7 (1.7)	87.7 (1.7)	87.7 (1.7)	87.7 (1.7)	8.0 (1.7)	8.0 (1.7)	8.0 (1.7)	8.0	
85-89	13,680	87.7 (1.7)	87.7 (1.7)	87.7 (1.7)	87.7 (1.7)	8.0 (1.7)	8.0 (1.7)	8.0 (1.7)	8.0	
90-94	13,680	87.7 (1.7)	87.7 (1.7)	87.7 (1.7)	87.7 (1.7)	8.0 (1.7)	8.0 (1.7)	8.0 (1.7)	8.0	
95-99	13,680	87.7 (1.7)	87.7 (1.7)	87.7 (1.7)	87.7 (1.7)	8.0 (1.7)	8.0 (1.7)	8.0 (1.7)	8.0	
100+	13,680	87.7 (1.7)	87.7 (1.7)	87.7 (1.7)	87.7 (1.7)	8.0 (1.7)	8.0 (1.7)	8.0 (1.7)	8.0	
Ethnicity										
White	13,680	87.7 (1.7)	87.7 (1.7)	87.7 (1.7)	87.7 (1.7)	8.0 (1.7)	8.0 (1.7)	8.0 (1.7)	8.0	
Black	13,680	87.7 (1.7)	87.7 (1.7)	87.7 (1.7)	87.7 (1.7)	8.0 (1.7)	8.0 (1.7)	8.0 (1.7)	8.0	
Hispanic	13,680	87.7 (1.7)	87.7 (1.7)	87.7 (1.7)	87.7 (1.7)	8.0 (1.7)	8.0 (1.7)	8.0 (1.7)	8.0	
Other	13,680	87.7 (1.7)	87.7 (1.7)	87.7 (1.7)	87.7 (1.7)	8.0 (1.7)	8.0 (1.7)	8.0 (1.7)	8.0	
Religion										
Protestant	13,680	87.7 (1.7)	87.7 (1.7)	87.7 (1.7)	87.7 (1.7)	8.0 (1.7)	8.0 (1.7)	8.0 (1.7)	8.0	
Catholic	13,680	87.7 (1.7)	87.7 (1.7)	87.7 (1.7)	87.7 (1.7)	8.0 (1.7)	8.0 (1.7)	8.0 (1.7)	8.0	
Jewish	13,680	87.7 (1.7)	87.7 (1.7)	87.7 (1.7)	87.7 (1.7)	8.0 (1.7)	8.0 (1.7)	8.0 (1.7)	8.0	
Muslim	13,680	87.7 (1.7)	87.7 (1.7)	87.7 (1.7)	87.7 (1.7)	8.0 (1.7)	8.0 (1.7)	8.0 (1.7)	8.0	
Other	13,680	87.7 (1.7)	87.7 (1.7)	87.7 (1.7)	87.7 (1.7)	8.0 (1.7)	8.0 (1.7)	8.0 (1.7)	8.0	
Family size^b										
1-2	13,757	88.7 (1.7)	88.9 (1.7)	77.7 (1.7)	77.7 (1.7)	8.0 (1.7)	8.0 (1.7)	8.0 (1.7)	8.0	
3-4	13,757	88.7 (1.7)	88.7 (1.7)	77.7 (1.7)	77.7 (1.7)	8.0 (1.7)	8.0 (1.7)	8.0 (1.7)	8.0	
5-6	13,757	88.7 (1.7)	88.7 (1.7)	77.7 (1.7)	77.7 (1.7)	8.0 (1.7)	8.0 (1.7)	8.0 (1.7)	8.0	
7-8	13,757	88.7 (1.7)	88.7 (1.7)	77.7 (1.7)	77.7 (1.7)	8.0 (1.7)	8.0 (1.7)	8.0 (1.7)	8.0	
9-10	13,757	88.7 (1.7)	88.7 (1.7)	77.7 (1.7)	77.7 (1.7)	8.0 (1.7)	8.0 (1.7)	8.0 (1.7)	8.0	
11-12	13,757	88.7 (1.7)	88.7 (1.7)	77.7 (1.7)	77.7 (1.7)	8.0 (1.7)	8.0 (1.7)	8.0 (1.7)	8.0	
13-14	13,757	88.7 (1.7)	88.7 (1.7)	77.7 (1.7)	77.7 (1.7)	8.0 (1.7)	8.0 (1.7)	8.0 (1.7)	8.0	
15-16	13,757	88.7 (1.7)	88.7 (1.7)	77.7 (1.7)	77.7 (1.7)	8.0 (1.7)	8.0 (1.7)	8.0 (1.7)	8.0	
17-18	13,757	88.7 (1.7)	88.7 (1.7)	77.7 (1.7)	77.7 (1.7)	8.0 (1.7)	8.0 (1.7)	8.0 (1.7)	8.0	
19-20	13,757	88.7 (1.7)	88.7 (1.7)	77.7 (1.7)	77.7 (1.7)	8.0 (1.7)	8.0 (1.7)	8.0 (1.7)	8.0	
21-22	13,757	88.7 (1.7)	88.7 (1.7)	77.7 (1.7)	77.7 (1.7)	8.0 (1.7)	8.0 (1.7)	8.0 (1.7)	8.0	
23-24	13,757	88.7 (1.7)	88.7 (1.7)	77.7 (1.7)	77.7 (1.7)	8.0 (1.7)	8.0 (1.7)	8.0 (1.7)	8.0	
25-26	13,757	88.7 (1.7)	88.7 (1.7)	77.7 (1.7)	77.7 (1.7)	8.0 (1.7)	8.0 (1.7)	8.0 (1.7)	8.0	
27-28	13,757	88.7 (1.7)	88.7 (1.7)	77.7 (1.7)	77.7 (1.7)	8.0 (1.7)	8.0 (1.7)	8.0 (1.7)	8.0	
29-30	13,757	88.7 (1.7)	88.7 (1.7)	77.7 (1.7)	77.7 (1.7)	8.0 (1.7)	8.0 (1.7)	8.0 (1.7)	8.0	
31-32	13,757	88.7 (1.7)	88.7 (1.7)	77.7 (1.7)	77.7 (1.7)	8.0 (1.7)	8.0 (1.7)	8.0 (1.7)	8.0	
33-34	13,757	88.7 (1.7)	88.7 (1.7)	77.7 (1.7)	77.7 (1.7)	8.0 (1.7)	8.0 (1.7)	8.0 (1.7)	8.0	
35-36	13,757	88.7 (1.7)	88.7 (1.7)	77.7 (1.7)	77.7 (1.7)	8.0 (1.7)	8.0 (1.7)	8.0 (1.7)	8.0	
37-38	13,757	88.7 (1.7)	88.7 (1.7)	77.7 (1.7)	77.7 (1.7)	8.0 (1.7)	8.0 (1.7)	8.0 (1.7)	8.0	
39-40	13,757	88.7 (1.7)	88.7 (1.7)	77.7 (1.7)	77.7 (1.7)	8.0 (1.7)	8.0 (1.7)	8.0 (1.7)	8.0	
41-42	13,757	88.7 (1.7)	88.7 (1.7)	77.7 (1.7)	77.7 (1.7)	8.0 (1.7)	8.0 (1.7)	8.0 (1.7)	8.0	
43-44	13,757	88.7 (1.7)	88.7 (1.7)	77.7 (1.7)	77.7 (1.7)	8.0 (1.7)	8.0 (1.7)	8.0 (1.7)	8.0	
45-46	13,757	88.7 (1.7)	88.7 (1.7)	77.7 (1.7)	77.7 (1.7)	8.0 (1.7)	8.0 (1.7)	8.0 (1.7)	8.0	
47-48	13,757	88.7 (1.7)	88.7 (1.7)	77.7 (1.7)	77.7 (1.7)	8.0 (1.7)	8.0 (1.7)	8.0 (1.7)	8.0	
49-50	13,757	88.7 (1.7)	88.7 (1.7)	77.7 (1.7)	77.7 (1.7)	8.0 (1.7)	8.0 (1.7)	8.0 (1.7)	8.0	
51-52	13,757	88.7 (1.7)	88.7 (1.7)	77.7 (1.7)	77.7 (1.7)	8.0 (1.7)	8.0 (1.7)	8.0 (1.7)	8.0	
53-54	13,757	88.7 (1.7)	88.7 (1.7)	77.7 (1.7)	77.7 (1.7)	8.0 (1.7)	8.0 (1.7)	8.0 (1.7)	8.0	
55-56	13,757	88.7 (1.7)	88.7 (1.7)	77.7 (1.7)	77.7 (1.7)	8.0 (1.7)	8.0 (1.7)	8.0 (1.7)	8.0	
57-58	13,757	88.7 (1.7)	88.7 (1.7)	77.7 (1.7)	77.7 (1.7)	8.0 (1.7)	8.0 (1.7)	8.0 (1.7)	8.0	
59-60	13,757	88.7 (1.7)	88.7 (1.7)	77.7 (1.7)	77.7 (1.7)	8.0 (1.7)	8.0 (1.7)	8.0 (1.7)	8.0	
61-62	13,757	88.7 (1.7)	88.7 (1.7)	77.7 (1.7)	77.7 (1.7)	8.0 (1.7)	8.0 (1.7)	8.0 (1.7)	8.0	
63-64	13,757	88.7 (1.7)	88.7 (1.7)	77.7 (1.7)	77.7 (1.7)	8.0 (1.7)	8.0 (1.7)	8.0 (1.7)	8.0	
65-66	13,757	88.7 (1.7)	88.7 (1.7)	77.7 (1.7)	77.7 (1.7)	8.0 (1.7)	8.0 (1.7)	8.0 (1.7)	8.0	
67-68	13,757	88.7 (1.7)	88.7 (1.7)	77.7 (1.7)	77.7 (1.7)	8.0 (1.7)	8.0 (1.7)	8.0 (1.7)	8.0	
69-70	13,757	88.7 (1.7)	88.7 (1.7)	77.7 (1.7)	77.7 (1.7)	8.0 (1.7)	8.0 (1.7)	8.0 (1.7)	8.0	
71-72	13,757	88.7 (1.7)	88.7 (1.7)	77.7 (1.7)	77.7 (1.7)	8.0 (1.7)	8.0 (1.7)	8.0 (1.7)	8.0	
73-74	13,757	88.7 (1.7)	88.7 (1.7)	77.7 (1.7)	77.7 (1.7)	8.0 (1.7)	8.0 (1.7)	8.0 (1.7)	8.0	
75-76	13,757	88.7 (1.7)	88.7 (1.7)	77.7 (1.7)	77.7 (1.7)	8.0 (1.7)	8.0 (1.7)	8.0 (1.7)	8.0	
77-78	13,757	88.7 (1.7)	88.7 (1.7)	77.7 (1.7)	77.7 (1.7)	8.0 (1.7)	8.0 (1.7)	8.0 (1.7)	8.0	
79-80	13,757	88.7 (1.7)	88.7 (1.7)	77.7 (1.7)	77.7 (1.7)	8.0 (1.7)	8.0 (1.7)	8.0 (1.7)	8.0	
81-82	13,757	88.7 (1.7)	88.7 (1.7)	77.7 (1.7)	77.7 (1.7)	8.0 (1.7)	8.0 (1.7)	8.0 (1.7)	8.0	
83-84	13,757	88.7 (1.7)	88.7 (1.7)	77.7 (1.7)	77.7 (1.7)	8.0 (1.7)	8.0 (1.7)	8.0 (1.7)	8.0	
85-86	13,757	88.7 (1.7)	88.7 (1.7)	77.7 (1.7)	77.7 (1.7)	8.0 (1.7)	8.0 (1.7)	8.0 (1.7)	8.0	
87-88	13,757	88.7 (1.7)	88.7 (1.7)	77.7 (1.7)	77.7 (1.7)	8.0 (1.7)	8.0 (1.7)	8.0 (1.7)	8.0	
89-90	13,757	88.7 (1.7)	88.7 (1.7)	77.7 (1.7)	77.7 (1.7)	8.0 (1.7)	8.0 (1.7)	8.0 (1.7)	8.0	
91-92	13,757	88.7 (1.7)	88.7 (1.7)	77.7 (1.7)	77.7 (1.7)	8.0 (1.7)	8.0 (1.7)	8.0 (1.7)	8.0	
93-94	13,757	88.7 (1.7)	88.7 (1.7)	77.7 (1.7)	77.7 (1.7)	8.0 (1.7)	8.0 (1.7)	8.0 (1.7)	8.0	
95-96	13,757	88.7 (1.7)	88.7 (1.7)	77.7 (1.7)	77.7 (1.7)	8.0 (1.7)	8.0 (1.7)	8.0 (1.7)	8.0	
97-98	13,757	88.7 (1.7)	88.7 (1.7)	77.7 (1.7)	77.7 (1.7)	8.0 (1.7)	8.0 (1.7)	8.0 (1.7)	8.0	
99-100	13,757	88.7 (1.7)	88.7 (1.7)	77.7 (1.7)	77.7 (1.7)	8.0 (1.7)	8.0 (1.7)	8.0 (1.7)	8.0	
Family size^b										
1-2	13,757	88.7 (1.7)	88.7 (1.7)	77.7 (1.7)	77.7 (1.7)	8.0 (1.7)	8.0 (1.7)	8.0 (1.7)	8.0	
3-4	13,757	88.7 (1.7)	88.7 (1.7)	77.7 (1.7)	77.7 (1.7)	8.0 (1.7)	8.0 (1.7)	8.0 (1.7)	8.0	
5-6	13,757	88.7 (1.7)	88.7 (1.7)	77.7 (1.7)	77.7 (1.7)	8.0 (1.7)	8.0 (1.7)	8.0 (1.7)	8.0	
7-8	13,757	88.7 (1.7)	88.7 (1.7)	77.7 (1.7)	77.7 (1.7)	8.0 (1.7)	8.0 (1.7)	8.0 (1.7)	8.0	
9-10	13,757	88.7 (1.7)	88.7 (1.7)	77.7 (1.7)	77.7 (1.7)	8.0 (1.7)	8.0 (1.7)	8.0 (1.7)	8.0	
11-12	13,757	88.7 (1.7)	88.7 (1.7)	77.7 (1.7)	77.7 (1.7)	8.0 (1.7)	8.0 (1.7)	8.0 (1.7)	8.0	
13-14	13,757	88.7 (1.7)	88.7 (1.7)	77.7 (1.7)	77.7 (1.7)	8.0 (1.7)	8.0 (1.7)	8.0 (1.7)	8.0	
15-16	13,757	88.7 (1.7)	88.7 (1.7)	77.7 (1.7)	77.7 (1.7)	8.0 (1.7)	8.0 (1.7)	8.0 (1.7)	8.0	
17-18	13,757	88.7 (1.7)	88.7 (1.7)	77.7 (1.7)	77.7 (1.7)	8.0 (1.7)	8.0 (1.7)	8.0 (1.7)	8.0	
19-20	13,757	88.7 (1.7)	88.7 (1.7)	77.7 (1.7)	77.7 (1.7)	8.0 (1.7)	8.0 (1.7)	8.0 (1.7)	8.0	
21-22	13,757	88.7 (1.7)	88.7 (1.7)	77.7 (1.7)	77.7 (1.7)	8.0 (1.7)	8.0 (1.7)	8.0 (1.7)	8.0	
23-24	13,757	88.7 (1.7)	88.7 (1.7)	77.7 (1.7)	77.7 (1.7)	8.0 (1.7)	8.0 (1.7)	8.0 (1.7)	8.0	
25-26	13,757	88.7 (1.7)	88.7 (1.7)	77.7 (1.7)	77.7 (1.7)	8.0 (1.7)	8.0 (1.7)	8.0 (1.7)	8.0	
27-28	13,757	88.7 (1.7)	88.7 (1.7)	77.7 (1.7)	77.7 (1.7)	8.0 (1.7)	8.0 (1.7)	8.0 (1.7)	8.0	
29-30	13,757	88.7 (1.7)	88.7 (1.7)	77.7 (1.7)	77.7 (1.7)	8.0 (1.7)	8.0 (1.7)	8.0 (1.7)	8.0	
31-32	13,757	88.7 (1.7)	88.7 (1.7)	77.7 (1.7)	77.7 (1.7)	8.0 (1.7)	8.0 (1.7)	8.0 (1.7)	8.0	
33-34	13,757	88.7 (1.7)	88.7 (1.7)	77.7 (1.7)	77.7 (1.7)	8.0 (1.7)	8.0 (1.7)	8.0 (1.7)	8.0	
35-36	13,757	88.7 (1.7)	88.7 (1.7)	77.7 (1.7)	77.7 (1.7)	8.0 (1.7)	8.0 (1.7)	8.0 (1.7)	8.0	
37-38	13,757	88.7 (1.7)	88.7 (1.7)	77.7 (1.7)	77.7 (1.7)	8.0 (1.7)				

© 2015 Healthy Teen Network

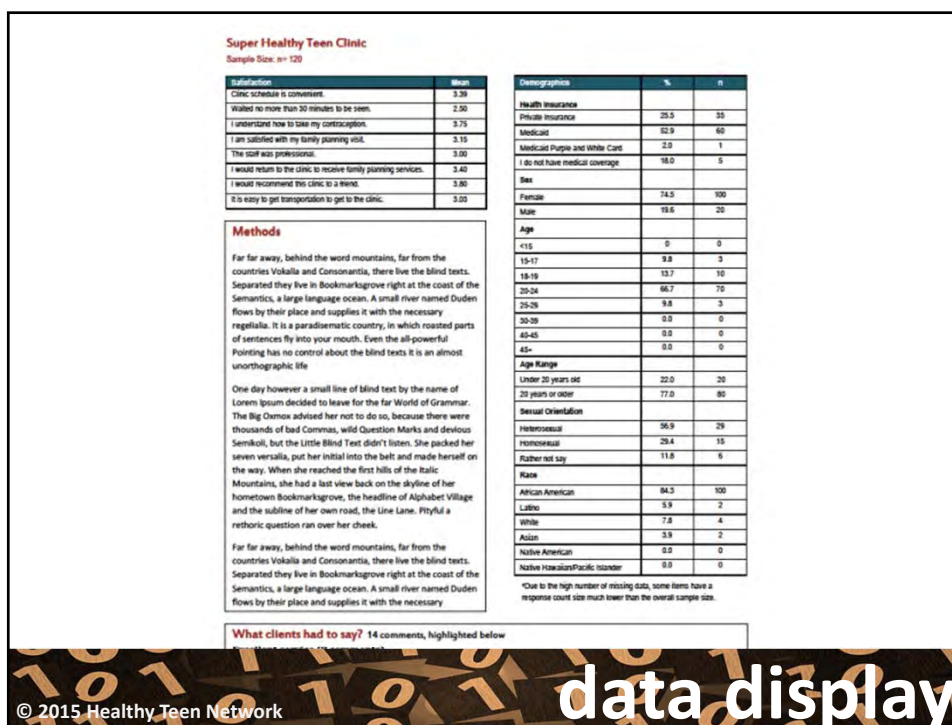
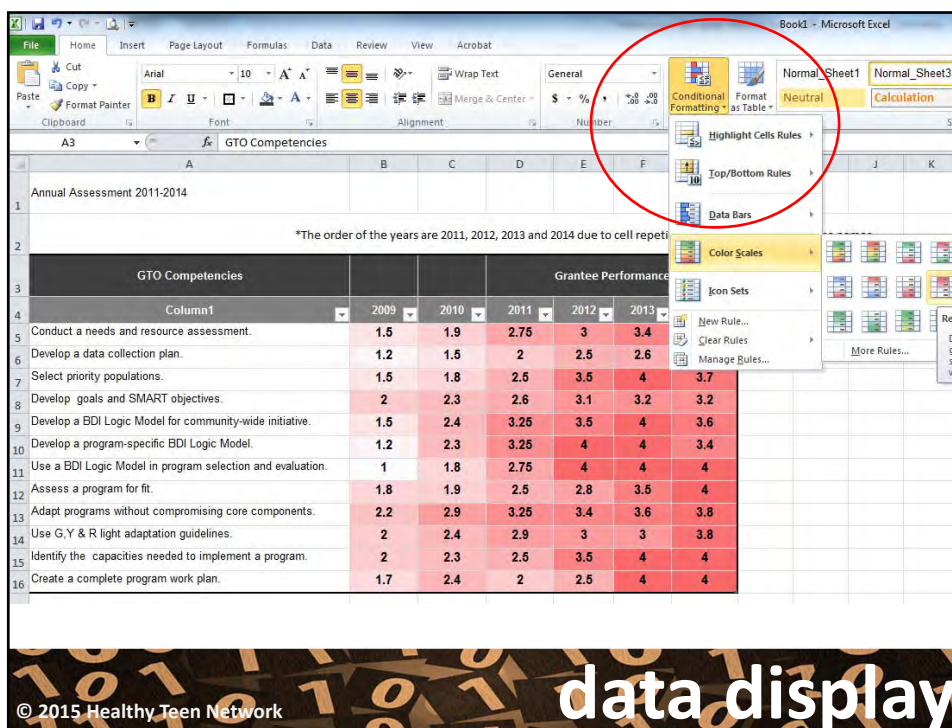
data display

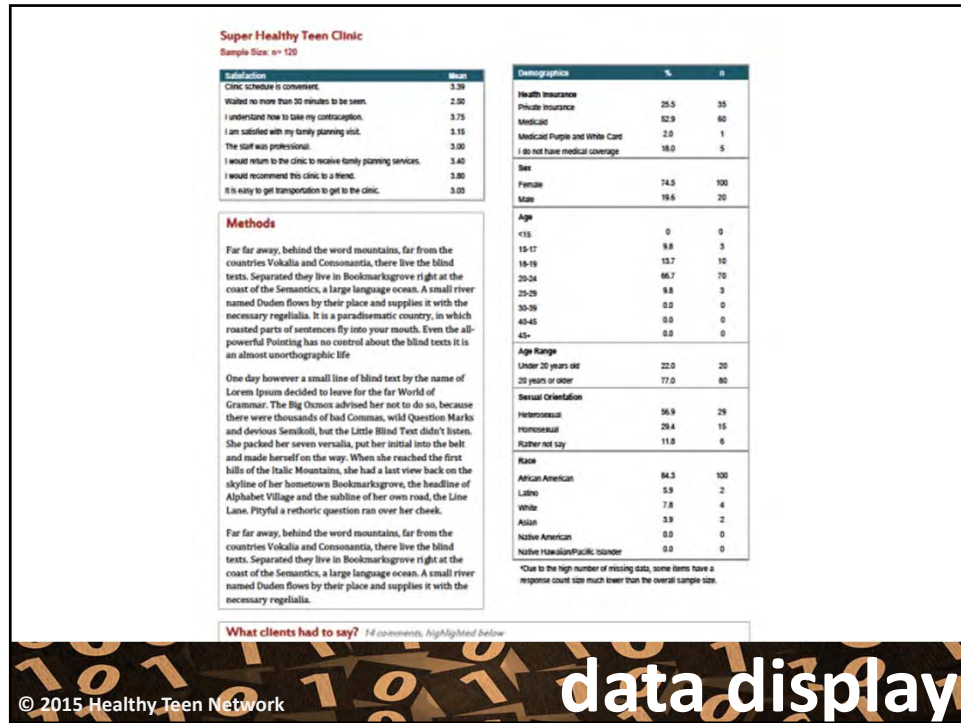
Heat Maps for Performance Data

GTO Competencies			Grantee Performance			
Column1	2009	2010	2011	2012	2013	2014
Conduct a needs and resource assessment.	1.5	1.9	2.75	3	3.4	3.8
Develop a data collection plan.	1.2	1.5	2	2.5	2.6	2.6
Select priority populations.	1.5	1.8	2.5	3.5	4	3.7
Develop goals and SMART objectives.	2	2.3	2.6	3.1	3.2	3.2
Develop a BDI Logic Model for community-wide initiative.	1.5	2.4	3.25	3.5	4	3.6
Develop a program-specific BDI Logic Model.	1.2	2.3	3.25	4	4	3.4
Use a BDI Logic Model in program selection and evaluation.	1	1.8	2.75	4	4	4
Assess a program for fit.	1.8	1.9	2.5	2.8	3.5	4
Adapt programs without compromising core components.	2.2	2.9	3.25	3.4	3.6	3.8
Use G,Y & R light adaptation guidelines.	2	2.4	2.9	3	3	3.8
Identify the capacities needed to implement a program.	2	2.3	2.5	3.5	4	4
Create a complete program work plan.	1.7	2.4	2	2.5	4	4

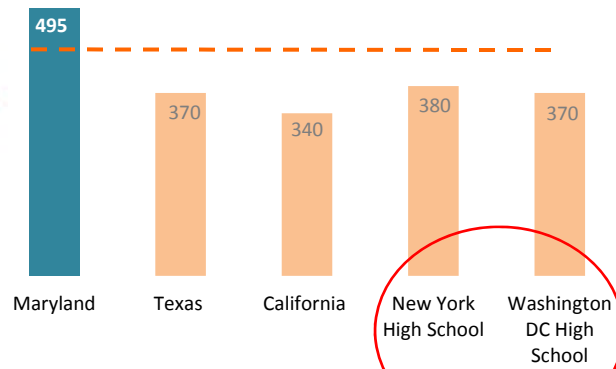
© 2015 Healthy Teen Network

data display



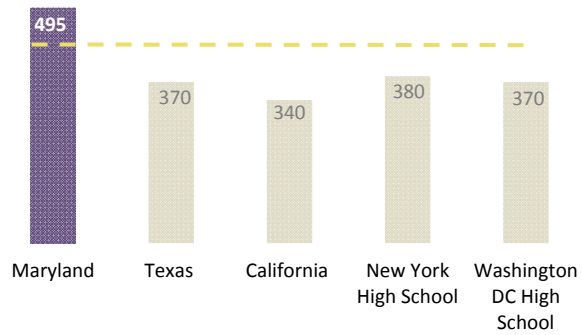
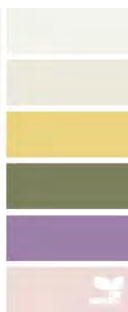


Maryland High School exceeded student participation.



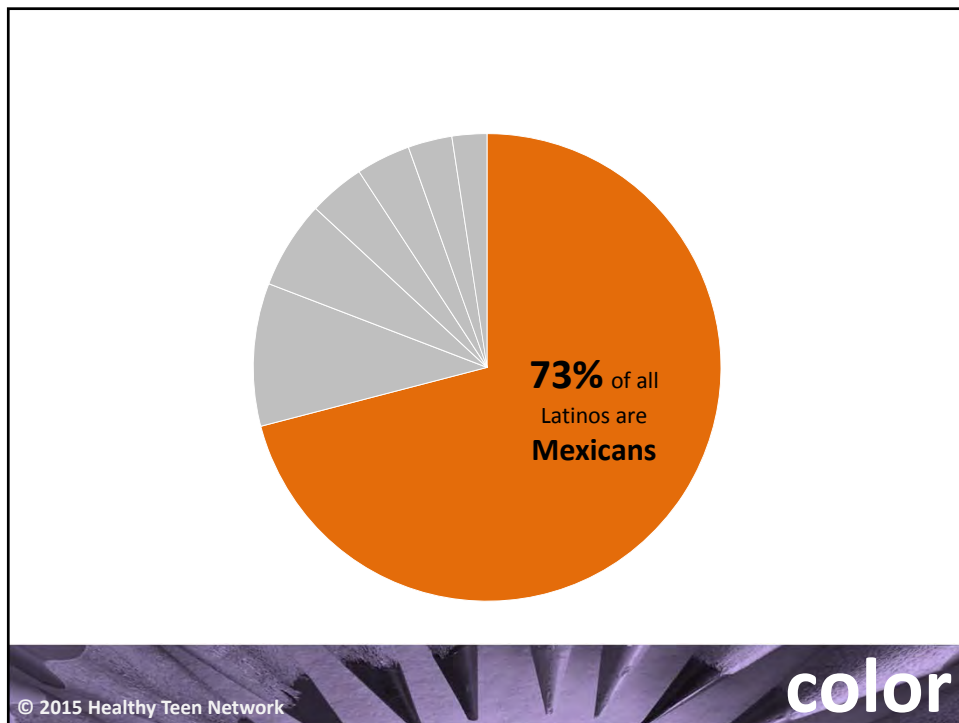
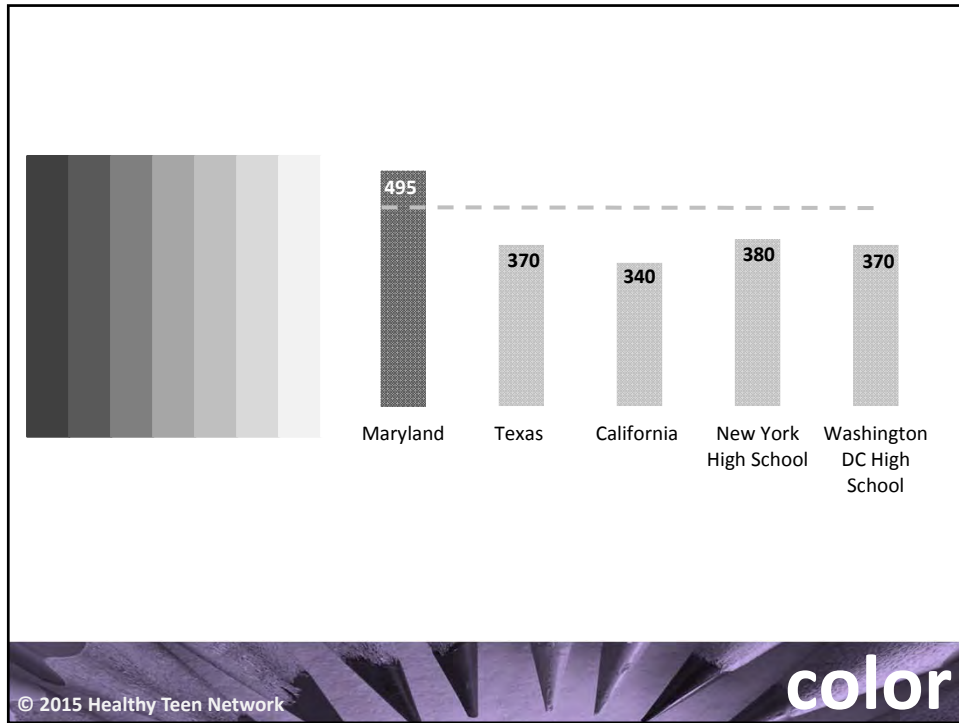
© 2015 Healthy Teen Network

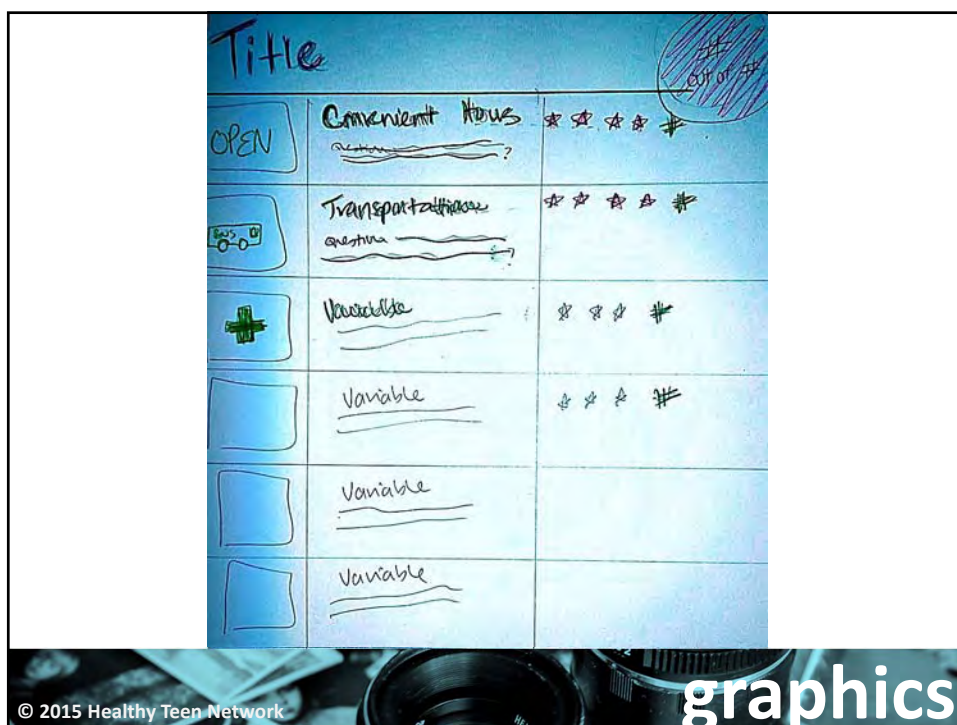
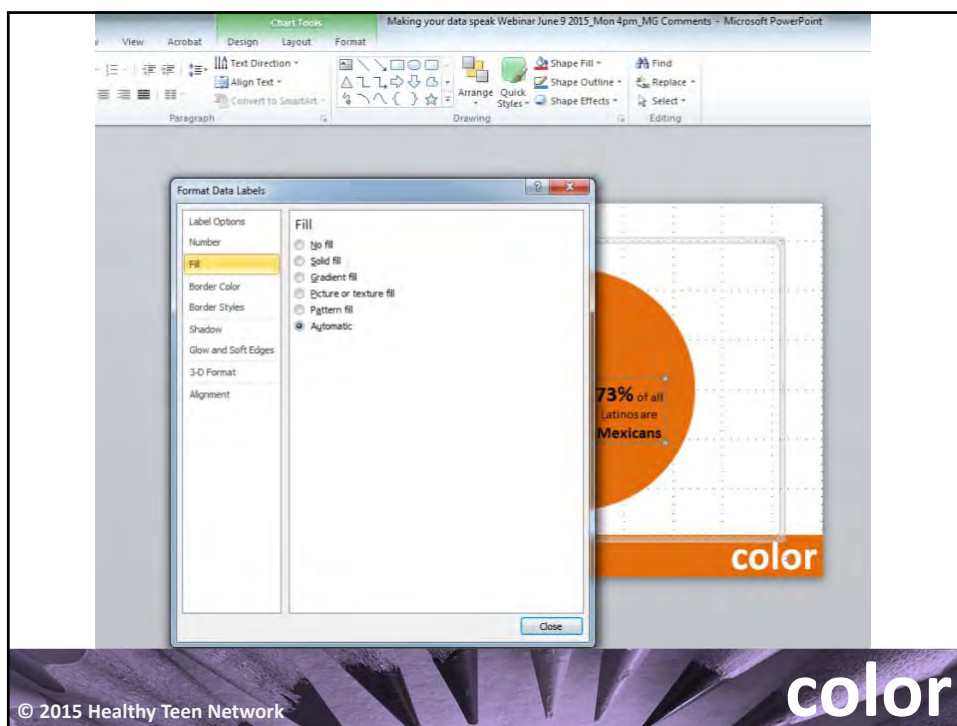
color



© 2015 Healthy Teen Network

color







What youth need to thrive?

- ✓ Self actualization
- ✓ Dreams and aspirations
- ✓ Health
- ✓ Resources
- ✓ Relationships
- ✓ Love
- ✓ Safety
- ✓ Housing
- ✓ Food



To **thrive**, girls need



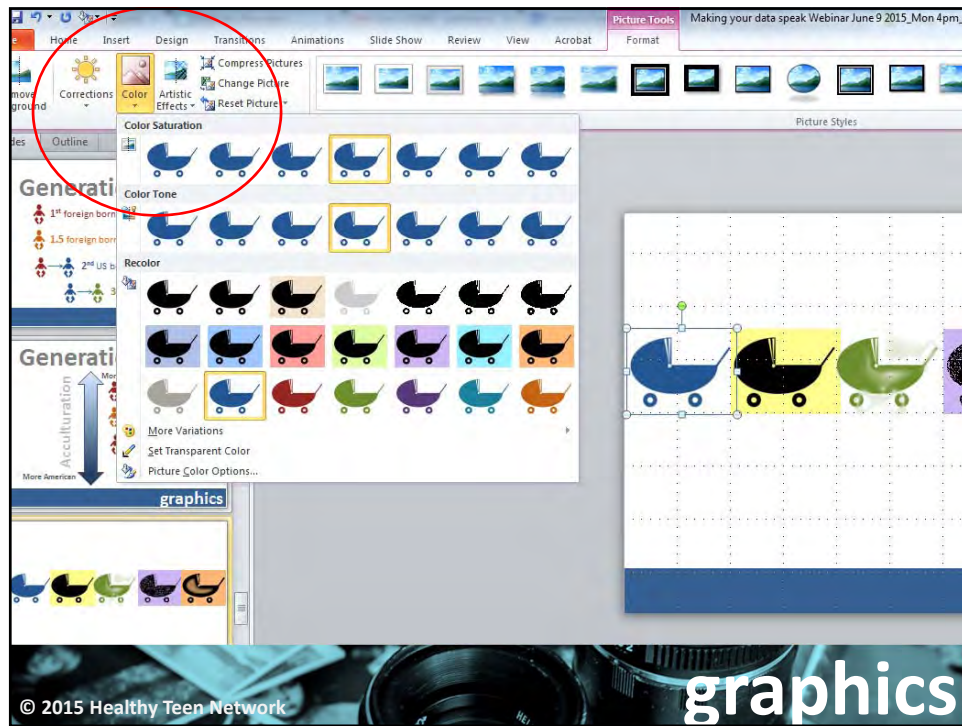
© 2015 Healthy Teen Network

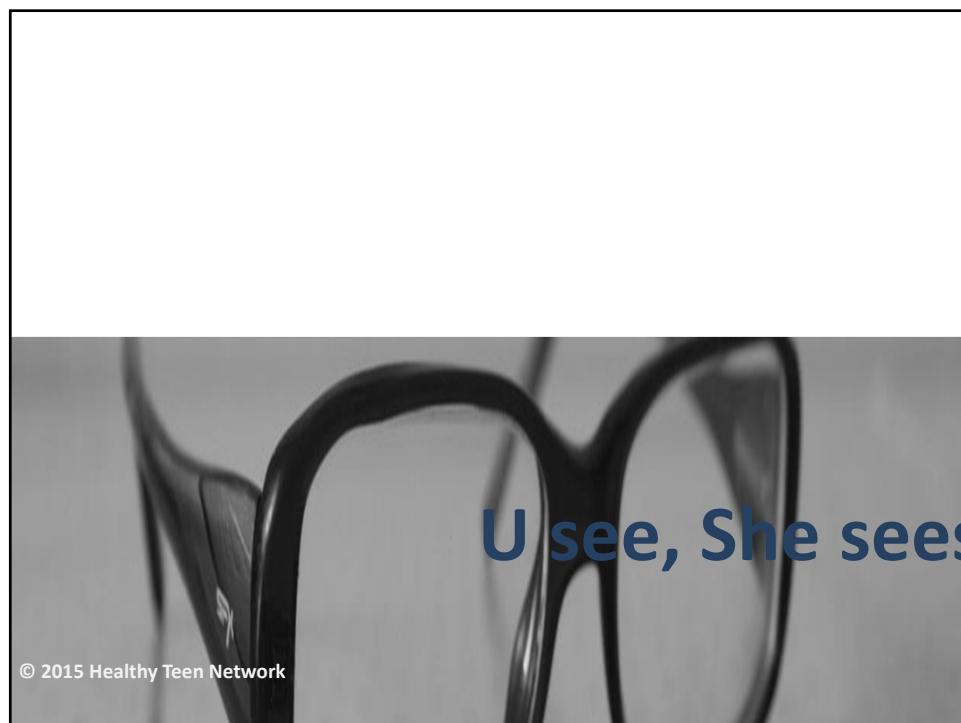
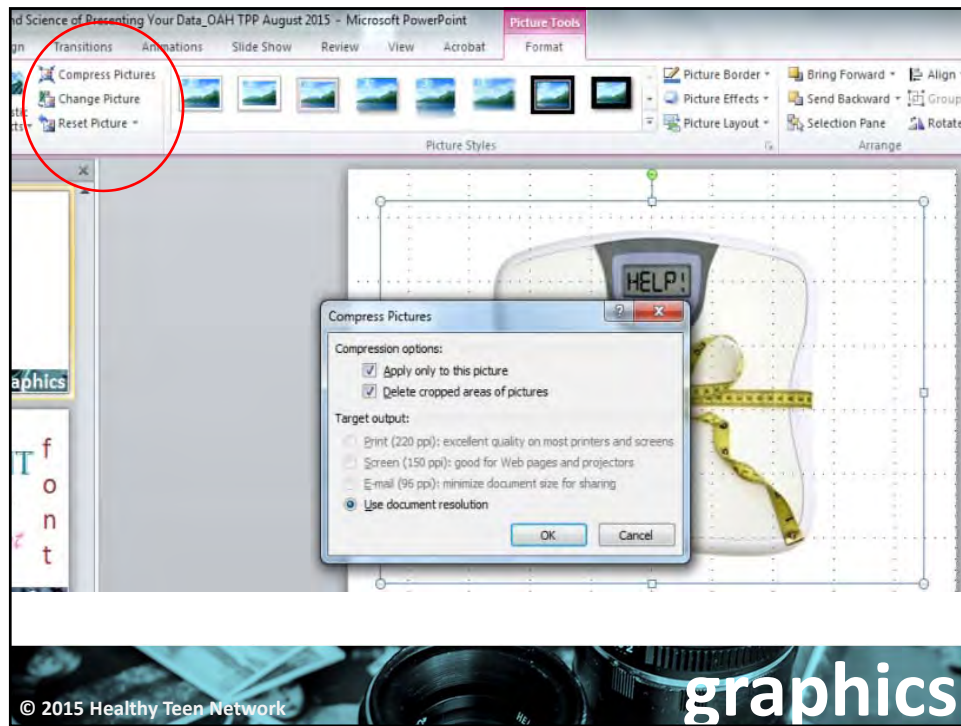
graphics

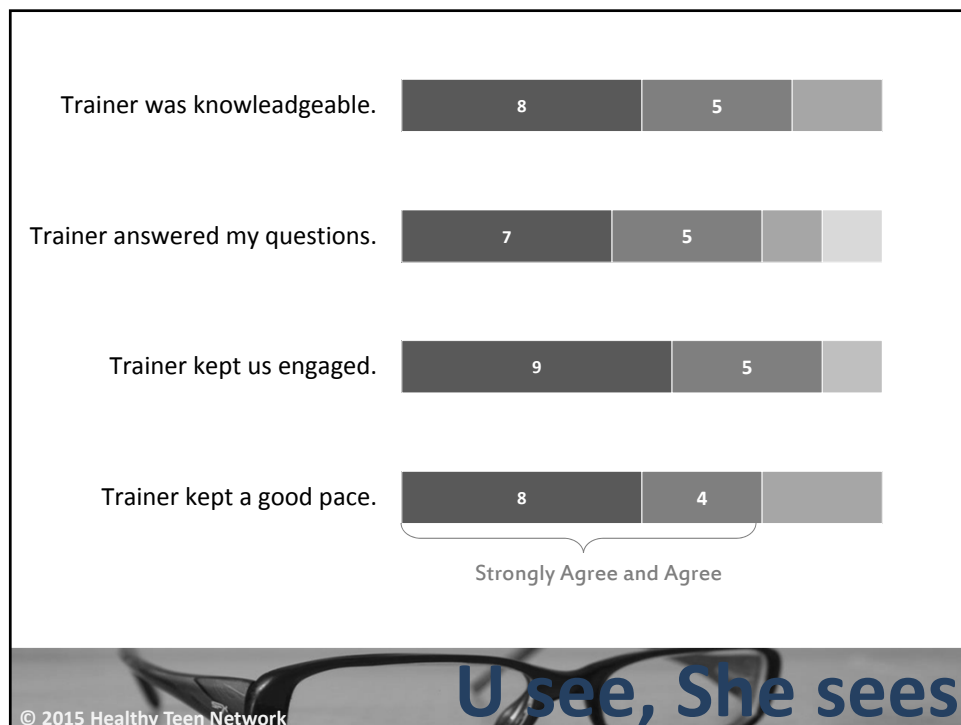
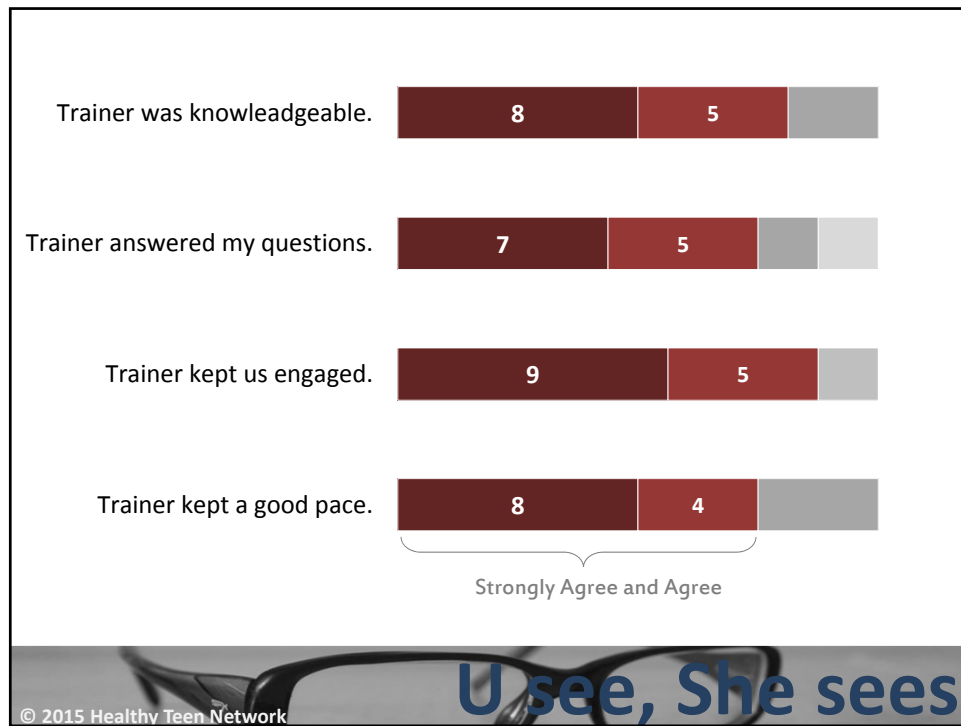


© 2015 Healthy Teen Network

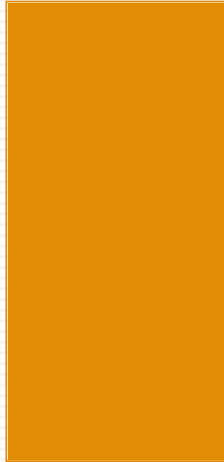
graphics







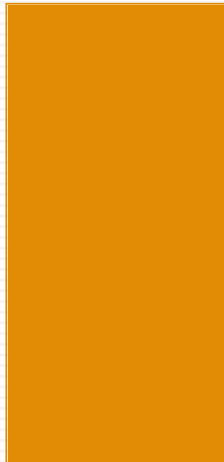
Resources



- **Books:**
 - Presenting Data Effectively by Stephanie Evergreen
 - Slide:ology by Nancy Duarte
 - The Functional Art by Alberto Cairo
- **Websites:**
 - Potent Presentations by American Evaluation Association: <http://p2i.eval.org/>
Great resources on designing engaging presentations and posters.
 - Anne Emery: <http://annkemery.com/>
Many Excel tutorials for creating cool charts and graphs (Essential chart selection site).
- **Blogs:**
 - Ane K. Emery: <http://annkemery.com/blog/>
 - Stephanie Evergreen: <http://stephanieevergreen.com/blog/>

41

Resources



- **Charts:**
 - JuiceLabs: <http://labs.juiceanalytics.com/chartchooser/index.html>
Gives your old Excel a boost!
 - Tableau Public: <http://www.tableau.com/> Free cloud-based data visualization.
- **Infographics:**
 - Canva: <https://www.canva.com/>: Drag and drop infographic tool.
 - Infogr.am: <https://infogr.am/app/#/tracklogin>: Drag and drop data visualization.
- **Fonts:**
 - 1001 Free Fonts: <http://www.1001freefonts.com/>
- **Graphics:**
 - 123rfs.com: <http://123rfs.com>
 - Pixabay: <http://pixabay.com/>

42

THANKS

43

Q & A



Genevieve Martínez-García, PhD

Senior Researcher

Genevieve@HealthyTeenNetwork.org



Healthy Teen Network

www.HealthyTeenNetwork.org

1501 St. Paul St., Suite 124
Baltimore, MD 21202
410.685.0410

Suggested Citation:
Martínez-García, G. (2015, June). *Making your Data Speak: The art and science of communicating your results effectively and beautifully*. Webinar conducted for Healthy Teen Network, Baltimore.

44